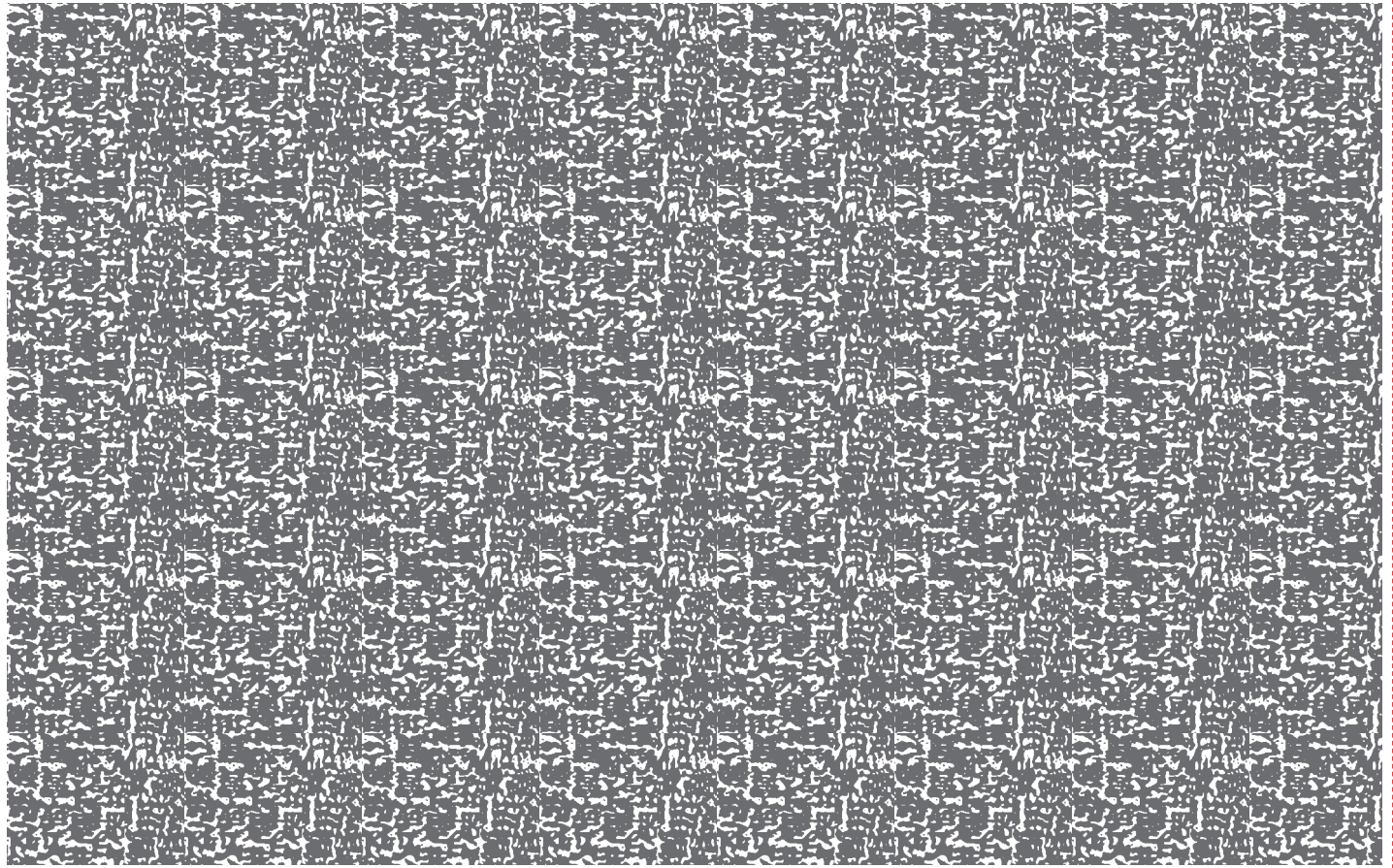


REMOVE SIDE EDGES FIRST. FOLD, CREASE AND TEAR ALONG THE DOTTED LINES.  
ENLEVER LES CÔTÉS EN PREMIER, PLIER PUIS DÉTACHER LE LONG DU POINTILLÉ.

REMOVE THESE EDGES FIRST. FOLD, CREASE AND TEAR ALONG THE DOTTED LINES.  
ENLEVER CES CÔTÉS EN PREMIER, PLIER PUIS DÉTACHER LE LONG DU POINTILLÉ.

REMOVE THESE EDGES FIRST. FOLD, CREASE AND TEAR ALONG THE DOTTED LINES.  
ENLEVER CES CÔTÉS EN PREMIER, PLIER PUIS DÉTACHER LE LONG DU POINTILLÉ.



Teller Stamp Here  
Estampille du caissier ici

ORIGINAL DOCUMENT

ORIGINAL DOCUMENT

ORIGINAL DOCUMENT

ORIGINAL DOCUMENT

Endorsement - Signature or Stamp  
Endossement - signature ou estampille

BACK/VERSO

ORIGINAL DOCUMENT

ORIGINAL DOCUMENT

ORIGINAL DOCUMENT

ORIGINAL DOCUMENT

ORIGINAL DOCUMENT

**MP** The security features listed below, as well as those not listed, exceed industry guidelines.

**Security Features**

- Multi-Colored Background
- Thermochromic Ink
- CoinRub & Fluorescent Artificial Watermark
- Microprint Border
- Bottom Warning Band

Heat sensitive pink spot disappears when exposed to heat, by rubbing or touching with thumb.

© Product design is a certification mark of Check Payment Systems Association

C D E



F E

F E